



ANNUAL REPORT

2022



MARY & JOHN ELLIOT
Charitable Foundation

Dear Friends,

As we take a reflective look back on 2022, we are inspired by the generous support that donors and friends of The Elliot, like you, have given to help further our mission to Inspire wellness, Heal our Patients and Serve with compassion in every interaction.

What is important for us to convey in this look back is the tremendous impact your giving is having on the care we provide our community.

- We doubled our ICU capacity to continue our response to the COVID-19 pandemic and to serve the other critical and traumatic healthcare needs of our community.
- Our Pediatric and Neonatal ICU teams responded to an unprecedented surge in RSV and flu cases in our youngest patients.
- We launched our Dementia-Friendly Care Initiative to ensure optimal and comfortable care for our patients with dementia.
- We are expanding state-of-the-art surgical services with our new Hybrid Operating Suite.

We are also focused on the future needs of our community. The expansion of our Emergency & Trauma Center will enhance care in southern NH, with the final phase of this expansion opening in Spring 2023. We will also be investing in further growth and expansion of our Surgical Services and in upgrades to patient rooms at Elliot Hospital. We are continuously adapting and innovating to meet the healthcare needs of our patients and to exceed their experience with us.

As a donor to The Elliot through the Mary & John Elliot Charitable Foundation, you are enhancing our care and helping our patients to heal and thrive. We are profoundly grateful for your trust in The Elliot and we thank you for choosing us as your charity of choice.

Please take a moment to read through the stories of care and impact in this 2022 Annual Report. We are proud to share these accomplishments with you and thank you again for playing a special role in the care our dedicated teams provide each day.

In health



W. Gregory Baxter, MD
President and CEO
Elliot Health System



James J. Tenn, Jr., Esq
Chair
Mary & John Elliot Charitable Foundation



Elliot Health System | 2022 Year of Care



14,568
ADMISSIONS



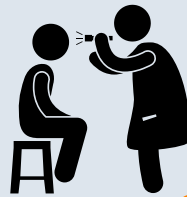
2,365
BABIES BORN



\$2.5 MILLION
RAISED IN DONATIONS



22,363
CANCER TREATMENTS



581,621
OFFICE VISITS



470
AFTER-HOURS VISITS



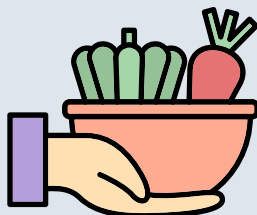
\$93 MILLION
CHARITY CARE



15,531
SURGERIES



147,579
ED AND URGENT CARE
VISITS



1,970
LBS OF FOOD DONATED
TO NH FOOD BANK



9,363
VOLUNTEER HOURS
TO THE ELLIOT



4,899
PATIENTS SERVED
BY VNA



A Newly Expanded and Innovative ELLIOT EMERGENCY DEPARTMENT

Construction is nearly complete on the 22,000-square-foot addition to The Elliot Emergency Department. This expansion will help to better serve our community, provide exceptional patient experiences, and improve workflows for staff.

Once complete, the Emergency Department will boast:

- A total of 32 private exam rooms
- Four exam bays
- Three trauma rooms
- Four pediatric exam rooms
- Six psychiatric evaluation rooms
- Ten rapid triage and treatment chairs

During this renovation project the PEP (Psychiatric Evaluation Program) area and Pediatric Emergency Department have remained in their locations,” says Ann Lawrence, Director of Facilities Planning for SolutionHealth.

The design team, providers, and nursing staff visited the emergency departments at three area hospitals to explore best practices. “We created mock rooms, an exam room, and a trauma room. Providers and nurses were able to come into the mock rooms and make changes to the design. So, they got to live and feel those rooms before we built them. We are really optimizing the ‘seconds count’ moto in this new emergency department,” Lawrence adds.

John Leary, Director of Emergency Services at Elliot Health System adds, “Presently, we are working in a space that is undersized and not efficient for workflows, throughput, and optimal patient care. The new ED was designed to accommodate the needs of the growing Greater Manchester community by increasing bed capacity, providing advanced technology and most importantly providing increased privacy and safety within the busiest emergency department in the state.

“While the pandemic delayed the project, we looked at the design and asked, ‘what are some of the changes that we would make now that we know what we know about COVID-19 and infection control?’ We made several changes to the reception area, waiting room, and triage area because that’s really where staff were feeling the pressure during the pandemic. We also enhanced the HVAC system, which allows for greater infection control and airflow during a surge like we experienced during the height of the COVID pandemic” explains Anne Lawrence.

Lawrence says the patient experience will improve in the new facility as there will be much more privacy and a more healing environment with updated furnishings. She also says employees working in the facility will notice that the layout enables them to do their job more easily and efficiently.

With the additional beds, The Elliot will be able to handle 64,000 patients in the Emergency Department every year. This is significant growth over what is currently possible.

We look forward to sharing outcomes and more donor stories after we open in June 2023.



PARTNERSHIPS IN ACTION

You may have seen the team from **Granite State Plumbing and Heating** (GSPH, Inc.) working around the hospital campus, especially during the build of the Solinsky Center for Cancer Care and now the Elliot Emergency Department but did you know they extend their partnership with The Elliot to the Mary & John Elliot Charitable Foundation as well?

For many years, the team at GSPH has been a President's Society donor to The Elliot, supporting the Hope is Here Campaign for the Cancer Center. Most recently they have directed their donations to program needs in the Emergency Department and for the Dementia Care program. They have sponsored the purchase of 3 new iPads and stands for the Dementia care program and funding a much-needed crash cart for the Rapid Triage and Treatment area in the new ED space. The Granite State team visited with John Leary and Nicole Filson from the ED team to see the new crash cart. During the visit, Nicole shared a story of a patient who needed this life-saving intervention. We are grateful to our friends at Granite State Plumbing and Heating for funding this important equipment.



Joining John and Nicole are:

- Al Poitras, Project Manager
- Eric Carroll, Project Foreman
- Ken Duchesne, President
- Kimberley Nichols, General Manager of Service
- John Hobden, Vice President
- Melissa Burke, Controller

Brady Sullivan Properties, a prominent business leader in our community, shows support for the most critical health issues facing our community, including cancer care and the need for state-of-the-art emergency and trauma care. Their dedication has strengthened the partnership with The Elliot.

“I am grateful to Shane Brady and Arthur Sullivan for their commitment to the health and well-being of our community. They understand the importance of strong health care institutions and the impact that The Elliot makes for the residents of Manchester and surrounding communities,” said Kelli Rafferty, executive director for SolutionHealth philanthropy and community engagement. “It is business partnerships and strong personal connections like this that help to ensure we meet the growing needs of our patients and deliver on our mission.

“The Elliot Hospital means a lot to Shane, myself, and our families, as well as members of the Brady Sullivan Properties family. We have experienced firsthand the greatness that has come from the Elliot Hospital and its departments. The decision to support the Mary & John Elliot Charitable Foundation was easy for us, as we know it will provide exceptional, and much-needed services to the community,” says Arthur Sullivan.





NO GRAY DAYS Makes a Powerful Impact for Elliot Cancer Patients

In May 2019, Aynn Barlotta was diagnosed with Glioblastoma. Due to an incredible team of surgeons, practitioners, nurses, and everyone involved, she was blessed with the gift of time. Aynn and her family made the most of this gift and spent time together in between radiation, chemotherapy, and other treatment sessions. Aynn never let the diagnosis define her. She found joy in the gift of today. She always had a smile on her face regardless of the prognosis and enjoyed every second she had seizing the day with her friends and family.

During the two-year fight against glioblastoma, the Barlotta's found peace and joy as a family together. When the tumor recurred in the midst of Covid, everything was put on hold. Over the following months, friends blessed the family with their vacation homes so that they could have quality time together as a family. From a lake house in New Hampshire to a beach house in Maine, and a mountain house in Vermont, each provided the Barlotta's with the invaluable gift of time spent together as a family.

After Aynn's passing, her family established the Aynn's No Gray Days Fund, in partnership with the Mary & John Elliot Charitable Foundation. This fund provides families battling brain cancer with the opportunity get away and spend quality time together. Aynn's hope was to give people a chance to make the most of today and create fun and joyful memories that will last forever. To date, the fund has raised nearly \$14,000 and has provided memorable time together for families working through the emotional complexities of a cancer diagnosis.

"No Gray Days has awarded patients and families with opportunities and experiences they may otherwise not have. This fund has allowed patients to focus on something other than their cancer and treatment and spend quality time with loved ones. It has also provided patients with much-needed services that are necessary as a part of their oncology journey. The Barlotta family has so graciously and selflessly created an incredible foundation in honor of and in celebration of Aynn."

-Jodi Hanley, Lead Oncology Social Worker

For more information about
supporting Aynn's No Gray Days
scan this QR code.



donate.elliothospital.org/nograydays



ELLIOT YOUNG PROFESSIONALS GROUP Networking With A Purpose



In 2022, The Elliot Hospital Young Professionals (EYP) group was established, giving young professionals in the Greater Manchester area an opportunity to network while also supporting the health and well-being of their community – networking with a purpose! In its inaugural year, the group organized Summer Fest, a family-friendly event held at McIntyre Ski area, as well as a networking event at To Share Brewing Company.

Through their fundraising efforts, The Elliot Young Professionals Group has helped to fund a SimBaby, a simulation manikin used for onboarding new staff members and ongoing training for current staff. This state-of-the-art training manikin helps to strengthen staff competencies and training on new or high-risk skills. Simulation manikins help staff to identify signs of stress in 3-6-month-old babies and provide staff with the advanced training needed to react quickly when an emergency arises.



Scan the QR code to learn more about EYP and how you can get involved!

Training with simulation manikins helps to enhance communication and teamwork among interdisciplinary clinicians and is associated with improved patient outcomes and employee satisfaction.

Through a series of networking and fundraising events, Elliot Young Professionals Group will continue to support needs at The Elliot that are important to the next generation.

The Elliot's Journey in Becoming a DEMENTIA FRIENDLY HOSPITAL

All patients with dementia deserve care which respects them as individuals. The Elliot is committed to implementing best practices to provide optimal care in the acute care setting for the patient and caregiver.

To support patients with a diagnosis of dementia and to ensure they feel safe when out of their usual home environments and away from their loved ones during a hospital stay, The Elliot has introduced the following:

- The "This Is Me" tool, which helps clinical staff understand the patient's preferences and needs – what they like to be called, what calms them, what they like to eat, activities they enjoy, past hobbies or interests, favorite music, etc. The goals are to calm the patient by helping the healthcare team to understand the patient.
- Dementia activity carts are stocked on all nursing units. Carts include an assortment of activities and tools to help dementia patients exercise their cognitive skills and keep them engaged.
- All new employees will receive training on dementia awareness. Specific education will be given to staff caring for patients with a dementia diagnosis or those exhibiting signs, as well education on how to best support their families.

The Elliot is committed to providing for the needs of not only the patient but also those of their caregivers, providing resources and support in all areas of care for their loved ones as they go along the journey with dementia.



"A patient was upset while multiple staff helped reposition him. He had been struggling and exhibiting aggressive and anxious behavior with nonsensical sentences. I asked, 'Would you like your dog?' He immediately responded 'Oh yes right here' [he pointed to a spot next to him]. He became visibly relaxed when we placed the stuffed animal dog next to him. He stroked the dog and suddenly a wave of relief overcame the room; patient and staff alike. It was a wonderful experience to witness."

-Bronwyn Gallant, MS, RN, CNL
Clinical Nurse Leader,
Fuller Unit & Total Joint Unit

LEADERSHIP

ELLIOT HOSPITAL BOARD OF TRUSTEES 2022

Greg Baxter, MD
Loretta L.C. Brady, Ph.D., MAC
Susan Critz, RN
David Cuzzi
Marina I. Feldman, MD, MBA
Carl Fier, MD
Charles Goodwin
Paul W. Hoff, PhD
James Hood, Esquire
Nancy Husarik, MD
Bradley Kreick
Stephen Langan
Marjan Makatam-Abrams, MD
Eva Martel
Heidi Meinz, MD
John Mercier
Daniel Monfried, Chair
Charles Rolecek
Philip Taub, Esquire
James J. Tenn, Jr., Esquire,
Vice Chair
Karen Van Der Beken

MARY & JOHN ELLIOT CHARITABLE FOUNDATION BOARD 2022

Kirsten Arnold
Greg Baxter, MD
David Bellman
Louise G. Forseze
Charles S. Goodwin
Mark Hagopian
Keith Janca
Shilpi Mehrotra
Holly Mintz, MD
Selma Naccach-Hoff
Richard Rawlings
Charles Rolecek
Adrienne Rupp
Elliot Smith
Kurt W. Strandson
James J. Tenn, Jr., Esq.
Renee Walsh
Staff Liaison: Kelli Rafferty

STAFF HONORED Through Inspired Gifts

The Inspired Giving program provides an opportunity for patients and family members to thank Elliot staff for the exceptional care received at The Elliot. The compassionate care that individuals and teams across the organization provide to those in our care has a tremendous impact on the patients we serve and their families. For many patients and their families, giving back is part of healing.

We are humbled and grateful to work with donors who wish to honor their loved ones with a gift, while also acknowledging the exceptional clinicians who cared for them.

We thank all of those who have made a lasting impression and difference in the lives of our patients and their families.



For more information about the Inspired Gift program please visit donate.elliotohospital.org/inspired-giving



PEARL MANOR RECIPIENTS

The Pearl Manor Fund was established in 2005. The funds are distributed through annual grants to non-profits in the Greater Manchester area providing assistance, comfort, care and treatment for the elderly population. These non-profit organizations provide services to seniors including access to medical care, safe housing, nutrition, independent living and transportation assistance.

In 2022, the Pearl Manor Committee awarded 7 grants, totaling \$353,332. Awards were made to Amoskeag Health, Boys & Girls Club of Greater Manchester, St. Joseph's Community Services/Meals on Wheels, Easter Seals NH, the Solinsky Center for Cancer Care at The Elliot, Waypoint, and The Caregivers (Catholic Charities).

Since 2005, The Pearl Manor Fund has awarded over \$3.4 million to local non-profits, providing much-needed services to seniors including daily meals, vision care, transportation, and cancer care.

ELLIOT HEALTH SYSTEM GALA

On Friday, September 16 guests gathered together in their gowns and suits after a 2-year hiatus at the Elliot Health System Enchanted Forest Gala. More than 350 guests were in attendance to support the Hybrid Operating Room.

The Hybrid OR is a surgical suite that encompasses state of the art imaging and a comprehensive medical team to serve the patient, all in the same room. It allows for real-time images during complex procedures with little to no disruption to patient care. The technology allows minimally invasive surgery to transition to an open procedure, if needed, and it offers increased flexibility during both minimally invasive and open procedures by limiting travel to different areas of the hospital prior to surgery for radiologic imaging.

Friends, sponsors, and staff were delighted to bring back this beloved event. Guests brought kindness, generosity and the spirit of unity was palpable. A few of the highlights of the event included our speakers, Dr. Chelsey Lewis, Dr. Curtis Quinn, and Martha Leighton, who offered the forward-looking views of a Hybrid Operating Room and shared their thoughts on how, as a community, we are moving forward.

The 2022 Gala program also had a special addition, the presentation of the Bill Green award. Congratulations to Jim Hood for receiving this well-deserved honor. We are grateful for your many contributions.

Funds raised from the Gala will be used to provide this leading-edge technology to patients starting in Spring 2023.



THANK YOU TO OUR GALA SPONSORS!



Amoskeag Anesthesia
AmeriHealth Caritas
Anagnost Companies
Bank of America
Bank of New Hampshire
Eastern Bank

Nixon Peabody, LLP
Northern Trust
Radiation Oncology Associates
Tenn & Tenn, PA





The 23rd Annual Elliot Golf Classic took place in June at Passaconaway Country Club. It was another gorgeous day on the course, raising over \$113,000 for the expansion of The Elliot Emergency Department.

The Elliot Health System Fall-Fest Golf Tournament returned in September at Hidden Creek Golf Course in Litchfield. The event raised nearly \$20,000 also for The Elliot Emergency Department expansion project.

We were happy to welcome local event sponsors, donors, as well as many Elliot physicians and staff again at these events. Support for the expansion of The Elliot Emergency Department is critical as we continue to see an increase in patients seeking care. We are grateful for the support of our Golf Committee, sponsors, vendors, and volunteers who continue to make this event a success.

GOLF CLASSIC & FALL FEST GOLF TOURNAMENTS

THANK YOU TO OUR GOLF SPONSORS!



GARDEN PARTY

On Thursday, May 19, 2022, The Mary & John Elliot Charitable Foundation welcomed guests to the Annual Garden Party at LaBelle Winery in Amherst. The event raised nearly \$65,000 to help support The Elliot's efforts to become a dementia-friendly organization. These funds help to provide tools for The Elliot staff to care for a person living with dementia and their families in our ED, hospital, and practices. The Elliot is committed to becoming a dementia-friendly organization by implementing best practices to provide optimal care in the acute care setting for our community.



THANK YOU TO OUR GARDEN PARTY SPONSORS!

			
			
			
			
Bedford Falls		Nixon Peabody	
The Arbors of Bedford		St. Mary's Bank	



WALK FOR HOPE

On June 12, 2022, hundreds of community members gathered for a day of inspiration at the 4th Annual Walk for Hope. Through participants' remarkable fundraising and the generosity of sponsors, nearly \$65,000 was raised to support patient programs at the Solinsky Center for Cancer Care at The Elliot.

Opening remarks that touched on personal and professional experiences alike, were given by Scott MacFarland, grateful patient and cancer survivor, and Dr. Brian Knab, Medical Director of Radiation Oncology. Each speaker offered heartfelt insight to the cancer patient programs that receive funding from Walk for Hope, including social services, nutrition assistance, transportation support, rehabilitation therapy, and mental health resources.

The event brought a sense of community and support for cancer patients. One participant, a cancer patient's wife, stated that there was no place they would rather be than the Walk for Hope; the date also marked their 40th wedding anniversary.

The Walk for Hope continues to be a thoughtful, uplifting event that showcases the devotion and supportive nature of the Greater Manchester community. Thank you to all Walkers, volunteers, sponsors and Team Captains for your participation. We look forward to coming together again on June 11, 2023!

THANK YOU TO OUR WALK FOR HOPE SPONSORS!

Team Galloping
for Granna

Epic



2023 SAVE THE DATES

GARDEN PARTY

May 18, 2023
LaBelle Winery, Amherst

ELLIOT GOLF CLASSIC

June 1, 2023
Passaconaway Country Club

WALK FOR HOPE

June 11, 2023
SNHU Campus

ELLIOT HEALTH SYSTEM GALA

September 8, 2023
DoubleTree by Hilton
Manchester Downtown

FALL-FEST GOLF

September 28, 2023
Hidden Creek Golf Course



elliothospital.org/events

PRESIDENT'S SOCIETY

The Elliot Health System President's Society is a leadership group of The Elliot who support the organization at levels of \$1,000 and above. Their philanthropic leadership allows The Elliot to continue to expand services and provide the latest technology, close to home for our greater Manchester community. We are humbled and grateful for their generous support.

ALKU
Allstate
American Cancer Society
AmeriHealth Caritas New Hampshire
Anagnost Companies
Ms. Kyra Anderson
Anonymous (6)
The Aquilino Foundation
Baker Newman Noyes
Estate of Emeline R. Balch
Bank of America Charitable Foundation, Inc.
Bank of New Hampshire
Dr. Greg Baxter & Mrs. Diane Baxter
Harun Bayraktar
Bedford Falls
Dr. John Bissonnette
BOND
Brady Sullivan Properties
Dr. Christopher Brauer
Dr. & Mr. Malgorzata D. Bulanowski
Mrs. Elizabeth Buteau
CGI Business Solutions
Mr. Steve Chaddock & Mrs. Rachel Chaddock
Dr. Manish Chopra
Coca-Cola Beverages Northeast
Mr. David Cochran & Mrs. Ellie Cochran
Consolidated Communications
Mr. Stephen Cornish
CR's The Restaurant
Dahlquist Trust Fund
Dr. & Mrs. Kevin Desrosiers
Digital Federal Credit Union
Ms. Joy Duffy
Mr. Peter Dupuis
e4h Environments for Health Architecture
Eastern Bank Charitable Foundation
Mr. Mark Eldridge
Elliot Hospital Associates
Elliot Hospital Nurses Alumnae Association
Dr. Jack T. Evjy & Mrs. Sheila A. Evjy
FirstLight
Estate of Leon M. & Hazel E. Fitch
Ms. Louise G. Forseze
Mr. Brian M. Frechette & Mrs. Erin Frechette
Attorney John E. Friberg, Jr. & Mrs. Katie Friberg

Fujifilm Medical Systems
Mr. Rob Glew & Mrs. Karen Glew
Mr. Charles S. Goodwin & Mrs. Jaye Goodwin
David P. and Dorothy M. Goodwin Family Fund
Mr. Pat Graham & Mrs. Cynthia Graham
Mr. & Mrs. Darrell M. Grande & Family
Granite State Plumbing & Heating, LLC
Granite United Way
Great NH Restaurants, Inc.
Ms. Beth Gutoff
Mrs. Anne-Marie Hafeman
Mr. & Mrs. Kevin Haggerty
Mr. & Mrs. Mark J. Hagopian
Hampshire Fire Protection Co., LLC
Ms. Pamela Harvey
Henry F. Berry Charitable Trust
Hillsbrook Village
Hoertdoerfer Dentistry, P.L.L.C.
Mr. & Mrs. James C. Hood
Interstate Electrical Services Corp.
Ms. Jessica Jacques
Mr. & Mrs. David Jeannette
Ms. Denise Jeffery
Ms. Sonia Joslin
Dottie & William Kelley
Dr. Brian Knab & Mrs. Allison Knab
Ms. Sharon Kostansek
Ms. Michelle Lambert
Stephen & Katherine Langan
Lindner Dental Associates, P.C.
LogixHealth
M & T Bank
Scott & Renee MacFarland
Manchester OB/GYN Associates
Mr. Lew Marden
Ms. Eva L. Martel
Mr. Richard D. Maxwell
Mr. John M. Mercier & Mrs. Dianne M. Mercier
Dr. Holly Mintz
Dr. Meghna Misra
The Monfried Family
Mr. Michael R. Morin
Ms. Molly Mortimer
Dr. Paul W. Hoff & Mrs. Selma Naccach-Hoff
Mr. & Mrs. Christopher Nelson



New York Life Insurance Company
Nixon Peabody L.L.P.
Northeast Delta Dental
Northeast Rehabilitation Hospital Network
Northern Properties, LLC
Northern Trust
Dr. Alexander Petron & Dr. Marion George
Physicians Resources, Ltd.
Pinnacle Mortgage Corp.
PIP Companies, LLC
Mr. Nico Pisello
Playa Bowls
Ms. Beverly Primeau
Purple Finch Events, LLC
Radiation Oncology Associates, P.A.
Ms. Kelli M. Rafferty
Dr. & Mrs. Kevin Rankins
Mr. Richard L. Rawlings & Mrs. Marsha A. Rawlings
Mr. Paul C. Remus & Mrs. Ann G. Remus
Rise Private Wealth Management
RiverWoods Manchester
Mr. Chuck Rolecek
Mrs. Shannon E. Rondeau
Mr. Christian Scott
Mr. Robert Singer
Mr. Kenneth S. Solinsky & Mrs. Grace S. Solinsky
Dr. Elizabeth & Mr. Jason Soukup
Southern New Hampshire Radiology Consultants, P.C.
Sprague Operating Resources
St. Mary's Bank
Dr. Brenna & Dr. Shawn Stapp
Mr. Kurt Strandson & Mrs. Hollie Strandson
Mr. David G. Lamothe & Mrs. Jill E. Teeters
The Tenn Family
Triangle Credit Union
Karen & David Van Der Beken
Wadleigh, Starr & Peters, P.L.L.C.
Frank O. Warren, Jr., M.D. Chapel Fund
Dr. & Mrs. Douglas Weckstein
Wilcox Family Foundation
Ms. Danielle Wilson
Winbrook
Ms. Lynn Zimmerman



COMMUNITY DONORS

Support for The Elliot from our community - patients, corporations, small businesses, and foundations is a testament to our compassionate staff and the exceptional care and services we offer our patients. Thank you to our community donors who have made The Elliot their charity of choice in 2022!

Mr. David Abdo
Ms. Julie Abrahamson
Ms. Ruthann Adams
Ms. Brenda Adams-Crafts
ADP Foundation
Ms. Raelynn Ainsworth
Ms. Stacey Albuquerque
Alejandro Cesar Events, LLC
Ms. Jennifer A. Alicea
ALKU
Ms. Tracey Allen-Jolicoeur
Allstate
Ms. Melissa Alpuerto
Ms. Marilyn Altabet
American Cancer Society
AmeriHealth Caritas New Hampshire
Ms. Kyra Anderson
Ms. Lyn Anderson
Ms. Sarah Andrews
Ms. Skylar Anguiano
Anonymous (19)
Ms. Silvia Anstey
Mr. Jon Antkowiak
Ms. Joanne Antkowiak
Ms. Valerie Antkowiak
The Aquilino Foundatoin
Mr. John Archambault
Mr. Brian Armitstead
Ms. Sarah Arndt
Ms. Kirsten Arnold
Mr. Joshua Ayers & Dr. Carrie Ayers
Ms. Megan Ayers
Mr. Alex Bail
Ms. Michelle Bailey
Ms. Patricia Baiocchi
Baker Newman Noyes
Ms. Michele Baker
Estate of Emeline R. Balch
Ms. Dawn Ball
Ms. Sarah Ball
Ms. Deborah Balmer
Bank of America Charitable
Foundation, Inc.
Bank of New Hampshire
Mr. Ray Baptista
Ms. Fatima Baptista-Palais
Ms. Sarah Bargeron
Ms. Debbie Barlotta
Ms. Rosa Barnhart
Ms. Laura Bashour
Ms. Jackie Bates
Harun Bayraktar
Ms. Barbara Beauchemin
Ms. Julie Beauchesne
Ms. Eileen Beaudoin
Ms. Valerie Beaudoin
Bedford Falls
Ms. Laurie Beebe
Ms. Rachel Behrens
Ms. Alison Beightol
Ms. Donna Beliveau
Mr. Alex Bellman
Mr. David Bellman
Ms. Dayna Bennett
Ms. Diane Benoit
Mr. Bradford Bent

Ms. Ashley Bibbo
Ms. Sandra Bibbo
Bigelow & Company CPA, PLLC
Dr. John Bissonnette
Mr. & Mrs. Daniel Bissonnette
Ms. Jacquelyn Bjorkman
Ms. Maria E. Blanchard
Mr. Henry Blanchette
Ms. Celine Blechman
Ms. Abigail Blood
Ms. Ellen Blood
Ms. Laura Bloom
Ms. Jane A. Bokum
Mr. Phillip Bonanno
Ms. Lisa Bonaparte
BOND
Ms. Laura Boronski
Charron Borst
Mr. Paul Botana-Gumbs
Ms. Kayla Boule
Ms. Christine Bowman
Loretta Brady, Ph.D.
Brady Sullivan Properties
Ms. Robynn Brannen
Ms. Christine Brassard
Dr. & Mrs. Frederick Briccetti
Mr. Leonard Brisson
Ms. Alexis Britton
Ms. Cassandra Brown
Ms. Judy Brown
Mr. & Mrs. Peter C. Bruhn
Ms. Lisa Burdin
Ms. Samantha Burdin
Ms. Charlene Burke
Mr. Clayton Burnham
Mrs. Elizabeth Buteau
Ms. Caryn Butts
Ms. Allison Cal Mallo
Ms. Lauren Callaghan
Casey Campolini
Mr. & Mrs. Dino Campolini
Mr. Randy Campolini
Ms. Andrea Cappello
Mr. Frederick Carberry
Mr. Adam Carey
Ms. Lauren Carroll
Mr. Thomas Carter
Reverend & Mrs. John A. Cerrato, Jr.
CGI Business Solutions
Mr. Nat Chamberlin
Ms. Danielle Chandonnet
Mr. William Chartier
Ms. Lisa Chartrand
Ms. Gertrude Chase
Ms. Martha Chazanoff
Ms. Toyna Chin
Mr. Douglas Cho
Mr. Pietro Ciano
Ms. Andrea Ciano
Ms. Cynthia Cima
Ms. Jaclyn Cirinna
Ms. Diane Clancy
Mr. & Mrs. Richard Clement
Mr. & Mrs. Norman G. Coates
Coca-Cola Beverages Northeast
Mr. David Cochran & Mrs. Ellie Cochran

Mr. Chris Coliandris
Ms. Danielle Collette
Ms. Catherine Conley
Consolidated Communications
Ms. Marybeth Cook
Ms. Teri Cooper
Mr. Tom Corcoran
Ms. Kathleen Corcoran
Mr. Mark Corson
Mr. Shawn Corson
Mr. Larry Cosmo
Ms. Kathleen Cote
Ms. Terri-Lyn Cotnoir
Ms. Kathleen Covell
Ms. Gloria Cox
CR's The Restaurant
Ms. Margaret Crispens
Ms. Stephanie Croatti
Ms. Tracy Cronshaw
Ms. Janet Crosby
Mr. & Mrs. Michael Croteau
Mr. Albert Croteau
Ms. Jane Croteau
Ms. Justine Croteau
Ms. Sandra Croteau
Ms. Maureen A. Cullity
Ms. Carrie Curreri
Chris Currie
Ms. Frances Czarneck
Dahlquist Trust Fund
Ms. Bonnie Dalrymple
Ms. Jenna Damato
Mr. James Danis
Ms. Jen Darrell
Ms. Marie DaSilva
Mr. Scott David
Ms. Sarah Davidson
Ms. Ruth Davis
Doug & Jeanie Dean
Ms. Maureen DeAngelis
Ms. Kristie DeCola
Ms. Lisa Deitrich
Ms. Janice Del Vecchio
Ms. Tracy A. Deleault
Ms. Nadia Delshad
Mr. William DeLuca
Mr. John Demeritt
Mr. Ronald L. Demers
Ms. Melissa Demers
Ms. Lori DeSantis
Ms. Rita Descoteaux
Ms. Alexia DeVinney
Mr. Enes Devito
Ms. Dalia Diaz
Ms. Joanne Dickie
Digital Federal Credit Union
Mr. & Mrs. Dave Dobrowski
Mr. Gary Dodd
Jean Dodge
Ms. Mary Kate Doherty
Ms. Margaret Donaghey
Jean E. Donovan
Ms. Lisa Doo

Ms. Mary Douglas
Mr. Stephen Dowling
Mr. David Downey
Ms. Elizabeth A. Downing
Ms. Shari Doyon
Mr. Carl Dubois
Ms. Joy Duffy
Ms. Maryse Dugas
Ms. Anne Duncan
Ms. Barbara Dunn
Ms. Donna Dunn
Ms. Rachel Dunn
Mr. Peter Dupuis
Ms. Teresa Durand
Mr. Andy Dutton
e4h Environments for Health
Architecture
Eastern Bank Charitable Foundation
Mr. Colby Easter
Ms. Cheri Easter
Tom Eckhardt
Mr. & Mrs. Aaron Eder-Linell
Mrs. Rebecca Eder-Linell
Ms. Tonya Eggleston
Ms. Alyssa Ehl
Mr. Jeff Eisenberg
Mr. Mark Eldridge
Elliot Breast Health Center
Elliot Hospital Associates
Elliot Hospital Nurses Alumnae
Association
Ms. Theresa Elliott
Dr. & Mrs. Luis S. Englander
Mr. & Mrs. Rob Ensinger
Ms. Kelly Esposito
Dr. Jack T. Evjy & Mrs. Sheila A. Evjy
Ms. Gwendolyn Fajardo
Ms. Lynne Falzarano
Mr. & Ms. Joseph Felkner
Fidelity Brokerage Services LLC
Ms. Margaret Filipowicz
Mr. James W. Finn
Ms. Emily Finney
FirstLight
Estate of Leon M. & Hazel E. Fitch
Ms. Reina Fitzpatrick
Ms. Mary R. Fleming
Mr. Matthew Foley
Mr. & Mrs. David W. Fontaine
Mr. Jonathan Ford, Jr.
Ms. Louise G. Forseze
Ms. Danielle Fortin
Ms. Laura Foti
Ms. Jessica Frail
Ms. Heidi Fraser
Mrs. Margaret J. Frost
Fujifilm Medical Systems
Ms. Rose Fulk
Ms. Cindy Gadd
Mr. Arthur Gagne
Ms. Lori Gagne
Ms. Andrea Gagnon
Ms. Martha Gagnon

COMMUNITY DONORS

Arthur J. Gallagher & Co.
Mr. Michael Gallant
Ms. Laura Gamache
Ms. Kristine Gamelin
Ms. Danielle Gardner
Mr. Kenneth Gateky
Ms. Jennifer Gaudet
Mr. Rick Gaumont
Mr. Shawn Gaumont
Ms. Susan Geary
Ms. Emily Gendreau
Mr. Mike Gentile
Mrs. Michele Gesualdo
Ms. Donna Giannetti
Ms. Donna Giberson
Mr. Craig Gibson
Ms. Debi Gifford
Gilead
Ms. Roberta D. Giordano
Ms. Jessica Girard
Ms. Lesa Girard
Givinga Foundation, Inc.
Mr. Rob Glew & Mrs. Karen Glew
Ms. Adna Glusac
Ms. Jane Godek
Ms. Michelle Golan
Mr. & Mrs. Donald Gonville
David P. and Dorothy M. Goodwin
Family Fund
Mr. Charles S. Goodwin & Mrs. Jaye
Goodwin
Mr. Chuck Gowing
Mr. Pat Graham & Mrs. Cynthia Graham
Jaqueline Granier
Granite State Plumbing & Heating, LLC
Granite United Way
Ms. Carrie Grassi
Great NH Restaurants' Charitable
Trust
Ms. Mary Beth Greathead
Taylor Green
Ms. Sheila Grimes
Ms. Jane Grimm
Ms. Tiffany Gromko
Mr. Daniel Guill
Mr. Stewart Gutoff
Mr. & Mrs. Kevin Haggerty
Mr. & Mrs. Mark J. Hagopian
Hair and Scalp 360 LLC
Ms. Andrea Hamel
Ms. Kristen L. Hamilton
Hampshire Fire Protection Co., LLC
Hampstead Lions Charities Account
Mr. Brian Handwerk
Ms. Mary Hansen
Ms. Shauna Hansen
Ms. Melony Hanson-Damm
Mr. & Mrs. Jeff Harnisch
Mr. Mark Harrington
Mrs. Joanne Harrington
Mr. James Harris
Mr. Mark Harris
Ms. Arianna Harris
Ms. Caroline Harris
Ms. Dawn Harris
Ms. Kathryn Harris
Ms. Meaghan Harris
Ms. Diane HARRISES

Ms. Heather Harrison
Ms. Pamela Harvey
Mr. Al Heavey
Mr. & Mrs. William M. Hebert
Ms. Michele Heisner
Mr. James Heitmiller
Ms. Courtney Heitmiller
Mr. Craig Henry
Henry F. Berry Charitable Trust
Mr. Robert Herrmann
Mr. Richard Hersom
Ms. & Mr. Patricia Hicks
Mr. Edward Hiers
Highland Goffe's Falls Elementary
School
Ms. Jane Hilder
Mr. Brenton Hill
Ms. Julie Hill
Hillsbrook Village
Mr. Kevin Hingham
Hitchiner Manufacturing Co., Inc.
Ms. Kayla Hoag
Ms. Sara Janes Hoag
Ms. Hilary Hodgman
Dr. Paul W. Hoff &
Mrs. Selma Naccach-Hoff
Ms. Laurie Hogan
Ms. Marjorie Hogne
Mr. & Mrs. James C. Hood
Ms. Elizabeth Hosang
Ms. Cathy Houlihan
Ms. Anne Howells
Howland Capital
Mr. & Mrs. Timothy Howley
Mrs. & Mr. Matt Hughes
Ms. Kristen Humphries
Ms. Christine Idzelis
iHeart Media
Interstate Electrical Services Corp.
Mr. Christopher Jacques
Ms. Jessica Jacques
Ms. Nancy Jacques
Mr. & Mrs. Keith Janca
Ms. Janet Jaworski
Ms. Sarah Jaworski
Ms. Susan Jaworski
Mr. & Mrs. David Jeannette
Ms. Denise Jeffery
Mr. Glenn Jenkins
Mrs. Amy Jenkins
Ms. Mary Jenkins
Jewett Street School Sunshine Fund
Mr. Michael Johnson
Ms. Erin Johnson
Ms. Kathy Johnson
Mr. Reginald Jones
Mr. Ronald Jones
Ms. Martha Jones
Katie Jordan
Mr. Marc Jordan
Mr. Ryan Joyce
Ms. Catherine Joyce
Ms. Hanna Judd
Mr. Christin Kackenmeister
Emese Kalnoki-Kis
Ms. Betsy Kalweit
Ms. Leticia Kalweit
Ms. Ashlyn Kapetanakis
Ms. Hannah Kekejian
Ms. Erin Kellett

Dottie & William Kelley
Ms. Mary Kelliher
Ms. Raven Kennedy
Ms. Samantha Kennedy
Ms. Erin Kerwin
Mr. & Mrs. Jeff Kibbie
Ms. Allyson Kimball
Ms. Amanda Klein
Ms. Mary Koon
Mr. & Mrs. Timothy Kubat
Mr. Benjamin Labbe
Ms. Kathryn LaBranche
Ms. Meaghan Lacerte
Ms. Michele Lacz
Mr. Ray Laduke
Ms. Brenda Laduke
Mr. Jared Lakin
Ms. Lindsey Laliberte
Ms. Heather Lambert
Ms. Michelle Lambert
Ms. Sheila Lambert
Ms. Amy Landers
Mr. Thomas Lane
Jaye Lang
Stephen & Katherine Langan
Ms. Katie LaPlant
Ms. Mary Jill Larocca
Ms. Pauline O. Larocca
Ms. Linda Larochelle
Mr. Brandon Latulippe
Mr. Cameron Latulippe
Mr. Peter Latulippe
Ms. Elaine Latulippe
Dr. Edward Lazarus
Ms. Christina Leach
Mr. John Leary
Ms. Cynthia Leathers
Ms. Janelle Leavitt
Maryann Leclair
Mr. Michael Leclerc
Ms. Michele Lefebvre
Ms. Jeanne Lemieux
Diane M. Lestage
Mr. Michael Letendre
Mr. Ben Lever
Mr. Sean Lewis
Ms. Jane Leydon
Mr. Garrett Lincoln
Ms. Theresa Lindner
Lindner Dental Associates, P.C.
Mr. & Mrs. John Liolios
Ms. Rona Loggus
LogixHealth
Ms. Maria Lopes-Murin
Ms. Mary Lord
LPL Financial
Mr. James Lucas
Ms. Karen Lutz
Ms. Jacquie Lynch
M & T Bank
Ms. Linda Macedonio
Scott & Renee MacFarland
Ms. Debra MacFarland
Mr. Cameron Macias
Ms. Michele Macias
Ms. Alison MacKay
Ms. Alicia MacLeay

Mr. Ignatius MacLellan
Mr. & Mrs. Michael MacNeil
Mr. James Major
Ms. Geraldine Major
Ms. Holly Maki
Ms. Julie Malcolm
Mr. Jeff Malone
Mr. JT Malone
Ms. Patricia Malone
Manchester OB/GYN Associates
Mr. James Manning
Mr. & Mrs. Roger Marchand
Mr. Lew Marden
Ms. Eva L. Martel
Mr. Wayne Martin
Ms. Sarah E. Martin
Mr. Joseph Marullo
Mr. Michael Mathieu
Mr. Jacob Maurice
Ms. Chelsea Maust
Ms. Alice Max
Mr. Bruce McColl
Ms. Jennifer McDavid
Mr. Kevin McDonough
Mr. & Mrs. Michael J. McFadden
Ms. Susan McFadden
Ms. Elizabeth McGovern
Ms. Barbara McGrogan
Ms. Mary McHale
Mr. Sean McKay
Ms. Alison E. McKay
Ms. Marie McKay
Ms. Sandra McKeen
McKinnon's Markets
Ms. Nicole McMahan
Ms. Lyn McMillan
Ms. Michele McMurray
Mrs. & Mr. Terrilynn McNeil
Mr. Andrew McRitchie
Mr. David McRitchie
Ms. Christina McRitchie
Ms. Heidi Meinz
Miss Christina Melanson
Mr. John M. Mercier &
Mrs. Dianne M. Mercier
Mr. Mark Mercier
Ms. Jeanine Merrill
Ms. Joanne Micale
Microsoft
Lori Jon & Stella Miller
Ms. Linda Miller
Ms. Nicole Miller
Ms. Kayla Mills
Ms. Luiza Mills
Ms. Jazmin Molina
Ms. Michelle Momenee
The Monfried Family
Mr. Christopher Moody
Ms. Jessica Moore
Ms. Katie Moore
Ms. Courtney Mora
Ms. Wendy Moran
Ms. Donna Moreland
Ms. Cindy Morello
Mr. Michael R. Morin
Ms. Diane Morisi
Mr. & Mrs. Michael R. Morris

COMMUNITY DONORS

Mr. Nicholas Morris
Ms. Stacey Morris
Mr. & Mrs. Robert G. Morrison
Ms. Debra Moskey
Ryan Mottram
Mr. Ryan Mulholland
Ms. Laura Murphy
Mrs. Cheryl A. Myers
Ms. Cynthia Mytkowicz
Ms. Donna Nardelli
Denise Nash
Ms. Kimberly Natale
Ms. Victoria Neault
Mr. Kenneth A. Neil
Mr. & Mrs. Christopher Nelson
Mr. Andrew Nemiccolo
Ms. Lynn Nemiccolo
New York Life Insurance Company
Ms. Kristin Nixon
Nixon Peabody L.L.P.
Ms. Jacqueline Noel
Nordic Global
Ms. Lynn Normand
Nick Norris
Northeast Delta Dental
Northeast Rehabilitation Hospital
Network
Northern Properties, LLC
Northern Trust
Northwest Elementary School
Mr. Nicholas Norton
Mr. William Noyce
Ms. Karen O'Brien
Mr. Shawn O'Clair
Ms. Cassandra O'Connor
Cecil Ogren
Mr. Joseph O'Hare
Ms. Lisa O'Hearn
Ms. Shelby O'Keefe
Ms. Donna Olds
Mr. John Olenio
Mrs. & Mr. Lori E. Olsen
Ms. Juliana Olson
Ms. Michelle O'Malley
Ms. Myra Oneill
Ms. Cathleen O'Sullivan
Mr. Michael Othot
Outdoor Pride Landscaping, Inc
Mr. George Pagliarulo
Ms. Lindsay Pakkila
Ms. Elizabeth Palmer
Ms. Catherine Papallo
Ms. Monique L. Paquette
Mr. Wyatt Paquin
Ms. Shannon Paradis
Ms. Karin Pariselli
Mr. Robert Parsons
Ms. & Mr. Lynda Pearson
Morgan Penn
Mr. & Mrs. Frances D. Penney
Ms. Marion Perreault
Ms. Laura Perry
Ms. Rebecca Perry
Ms. Keri Peters
Dr. Alexander Petron &
Dr. Marion George
Ms. Debra Phaneuf
Ms. Christine Phillips

Physicians Resources, Ltd.
Pinnacle Mortgage Corp.
PIP Companies, LLC
Mr. John J. Piscioniere
Mr. Nico Pisello
Playa Bowls
Ms. Jennifer Plourde
Ms. Ellen Podgorski
Mr. Jarrett Porter
Ms. Cheri Porter
Ms. Erin Potrzeba
Mr. & Mrs. Pouliot
Ms. Cathy Pouliot
Ms. Marybeth Powell
Mr. Shane Prince
Ms. Dawn Proulx
Ms. Jen Provenzano
Ms. Kimberley Prygocki-Jeakins
Purple Finch Events, LLC
Mrs. Lara Quiroga
Ms. Caroline Racine
Radiation Oncology Associates, P.A.
Ms. Donna Radovich
Ms. Melissa Radzik
Mr. & Mrs. Thomas Raffio
Ms. Melissa Rakiey
Ms. Christine Randall
Ms. Katelyn Randall
Mr. Richard L. Rawlings &
Mrs. Marsha A. Rawlings
Ms. Carol Rawson
Ms. Linda Rawson
Mr. Michael Redmond
Ms. Kathleen Redmond
Ms. Paulette Redmond
Mr. Paul C. Remus &
Mrs. Ann G. Remus
Ms. Martha Reyna-Medina
Mr. Charlie Richardson
Ms. Kirstin Ridge
Ms. Frances Riel
Rise Private Wealth Management
Ms. Idaliz Rivera
RiverWoods Manchester
Ms. Margaret Rizzo
Ms. Jeana Roberge
Mr. & Mrs. Armando J. Roberto, Jr.
Mr. Evan Robidoux
Mr. Zane Robidoux
Ms. Mary Robidoux
Ms. Dorra Robitaille
Mr. Chuck Rolecek
Mr. & Mrs. Albert J. Rondeau
Mr. Patrick Rooney
Ms. Christina Rousseau
Dr. & Mrs. Stephen F. Rowe
Mr. Barry J. Rubin
Mr. Keith Rubin
Mr. Sergio Rubio
Ms. Adrienne Rupp
Mr. Wes Russell
Ms. Cristina Sakowich
Mr. Jay Salem
Ms. Judith A. Salkovitz
Ms. Sherisse K. Salter
Mr. Curtis G. Schneider
Mr. Stephen Schofield
Mrs. Dorothy M. Schuler
Ms. Hilary Schwoegler
Mr. & Mrs. David Scott

Mr. Christian Scott
Mr. & Mrs. Alan Searleman
Mrs. Cindy Searles
Mrs. Ellen Shea
Kolby Sheaff
Ms. Kelsey Sheaff
Mr. Michael Sheehan
Mr. Paul Sheehan
Mr. Dave Shrewsbury
Mr. & Mrs. Thomas Silva
Ms. Kristen Simon
Ms. Diane Simone
Ms. Patricia Sinclair
Mr. Robert Singer
Mr. Andrew Sklarin
Mr. Christopher Sklarin
Ms. Jennifer Small
Mr. Elliot J. Smith
Mr. Tim Smith
Ms. Skyler Smith
Ms. Suzanne Smith
Mr. Kenneth S. Solinsky &
Mrs. Grace S. Solinsky
Eli Soto
Ms. Mary W. Soucy
Ms. Melissa Soucy
Southern New Hampshire
Radiology Consultants, P.C.
Sprague Operating Resources
Vasu Sreekakolapu
St. Mary's Bank
Ms. Beth Stacy
Kaitlin Stanton
Mr. Derek Steele
Mr. & Mrs. James Steiner
Ms. Deb Stephenson
Mr. Andrew Sterling
Ms. Claire Stewart
Ms. Deborah Stewart
Mr. Brian Stone
Ms. Carol Stone
Mr. Kurt Strandson &
Mrs. Hollie Strandson
Mr. Jonathan Strimling
Mr. Stephen Strong
Ms. Michele Sukerman
Mr. Scott Sullivan-Congdon
Ms. Anna Swist
Mr. Joe Sylvester
Ms. Brittany Tafe
Ms. Cathryn Taft
Mr. Ausitn Talbot
Mr. Jeffrey Talbot
Ms. Lisa Tamplin
Mr. Chad Tanguay
Ms. Katelyn Tansino
Ms. Lisa Tashjian
Ms. Christine Tatro
Ms. Molly Taylor
Mrs. Jill E. Teeters &
Mr. David G. Lamothe
The Tenn Family
Mr. Vincent Tentindo
Ms. Delayna Terrio
Mr. & Mrs. Emile J. Tetu
Mr. & Mrs. Paul Therrien
Mr. Lawrence Thibodeau
Title 9 Boxing Club
Ms. Elaine Towle
Ms. Valerie Tratner



Mr. Eric Treibman
Triangle Credit Union
Mrs. Tringali
Mr. & Mrs. Roger Trudel
Mr. Michael Trudel
Ms. Audrey Tsai
Ms. Louise Tucker
Tucker's
Mr. Harold Turner, Jr. &
Mrs. Laura Turner
Ms. Grace Tuttle
Ms. Pamela Urban-Morin
Ms. Danielle Vallance
Karen & David Van Der Beken
Mr. Peter Vanderweil
Ms. Aline VanDeventer
Mr. Keith Veale
Ms. Diane Ventresca
Mr. Shawn Ventura
Ms. Kimberly Wade
Wadleigh, Starr & Peters, P.L.L.C.
Honorable Marguerite L. Wageling
Ms. Colleen Wallace
Ms. Melissa L. Wallace
Mr. Michael Walsh
Casey Walter
Ms. Jennifer Walter
Diane L. Walton
Ms. Phyllis Ward
Frank O. Warren, Jr., M.D. Chapel Fund
Mr. Paul T. Weathers
Dr. & Mrs. Douglas Weckstein
Mr. Charles Wehlage
Ms. Hannah Wesolowski
Weston & Sampson Engineers, Inc.
Mr. Allan White
Ms. Rachel White
Ms. Cheryl Whitney
Ms. Linda Sue Wiest
Wilcox Family Foundation
Susan M. Williams, LLC, Attorney at Law
Mr. & Mrs. Thomas Williams
Mr. Mike Wilson
Ms. Melissa Wilson
Winbrook
Ms. Jennifer Winston
Ms. Marrassa Wolfe
Ms. Betsy Woodring
Ms. Nancy Wright
Ms. Alison Wyso
Ms. Laurie Yennaco
Ms. Hannah Young
Ms. Sharon Young
Tristin Young
Ms. Nancy C. Zajano
Ms. Lynn Zimmerman

EMPLOYEE GIVING

Employee giving at The Elliot has been a strong and critical part of furthering the work of The Mary & John Elliot Charitable Foundation for decades. Over the past three years alone Elliot employees have collectively contributed nearly \$500,000! Thank you to these caregivers and staff who not only choose The Elliot to give and receive care, but also choose us as their charity of choice. **We care. We share. We give. We are The Elliot.**

Ms. Samantha Almeida
Dr. Jaime Altabet
Ms. Juanita Alvarado
Ms. Michelle Andrade
Ms. Shannon Argo
Ms. Jennifer Babicz
Ms. Katie Balcom
Ms. Noella D. Banks
Mrs. Carol J. Barrett
Mr. Cayden Barrett
Ms. Michelle Barzaga
Ms. Teresa Bastek
Dr. Greg Baxter
Ms. Nicola Beauregard
Ms. Arielle Beebe
Ms. Krista Belanger
Ms. Laurie Benjamin
Ms. Melinda Bennet
Ms. Lynda Bernier
Ms. Aimee Berry
Ms. Theresa Bianchi
Ms. Sharon Blackwell
Ms. Sarah Blaikie
Ms. Karen Bolduc
Mrs. Michele J. Bossie
Ms. Caitlin Bova
Ms. Jill Bowden
Mrs. Linda Branscum
Dr. Christopher Brauer
Ms. Amy Brennan
Ms. Catherine Brennan
Ms. Rebekah Briggs
Ms. Melissa Brule
Ms. Alison R. Bubar
Dr. Malgorzata D. Bulanowski
Dr. Todd Burdette
Ms. Lois Burrige
Mrs. Heidi N. Buxton
Ms. Jeanne Campbell
Ms. Rebekah Carey
Ms. Wendy Casavant
Mrs. Alice Cashin
Mrs. Rachel Chaddock
Ms. Sarah Chaloux
Ms. Laura Chandler
Mr. Richard G. Charbonneau
Mr. Derek Chartier
Mrs. Rachel M. Chase
Dr. Manish Chopra
Ms. Gina Christensen
Ms. Anne Cinquegrana
Ms. Marsha Clements
Ms. Dianne Collins
Mrs. Gail F. Columb
Ms. Maryellen Concannon
Mrs. Karen Cookson
Ms. Danielle Cooper
Ms. Cheryl Corey
Mr. Stephen Cornish
Mrs. Tracey L. Croteau
Ms. Heather Crowell
Ms. Kathleen Curit
Ms. Donna Daley
Ms. Reagan Daniels
Ms. Amanda Davis

Ms. Pamela Davis
Dr. Matthew Dayno
Ms. Karen DeLangie
Dr. Michael DeLeo
Mr. Jeffrey A. Demers
Ms. Alice Demos
Ms. Lindsey Denwiddie
Ms. Connie Deshaies
Mrs. Holly Desrosiers
Dr. Kevin Desrosiers
Attorney Clara Dietel
Ms. Ana B. Dionne
Dr. Kathleen Doherty
Ms. Laura L. Dolan-Rommell
Miss Jennifer Dolloff
Ms. Jayne Donnelly
Ms. Anna Donoghue
Ms. Whitney E. Dore
Ms. Emily Dowling
Ms. Frances Doyle
Ms. Michelle Drolette
Ms. Donna Dube
Ms. Rebecca Duchesne
Ms. Maureen Duda
Ms. Rebecca Dutton
Ms. Deborah Duval
Mr. Brian T. Eddy
Ms. Kate Evans
Ms. Tatum Fahs
Ms. Alisha Feightner
Dr. Marina Feldman
Mr. Joseph Felkner
Mrs. Barbara B. Feloney
Mrs. Dawn Fernald
Ms. Jennifer Finn
Mr. Robert Fishwick
Ms. Tanya Flagg
Mr. Steven Foster
Ms. Dianne Fournier
Ms. Michelle Frawley
Ms. Anne Frechette
Mr. Brian M. Frechette
Attorney John E. Friberg, Jr.
Mrs. Lorraine Gallagher
Ms. Judith Garceau
Ms. Mary Ann Geist
Ms. Melissa George
Ms. Annette Gervais
Ms. Ann Marie Giacalone
Ms. Deidre Goodwin
Ms. Heather Gordon
Ms. Rebecca Ann Gosselin
Ms. Cheryl Graff
Mrs. Cynthia Graham
Mrs. Sabrina Graichen
Mr. Darrell M. Grande
Ms. Robin Gustafson
Ms. Beth Gutoff
Ms. Carrie Hadik
Mrs. Anne-Marie Hafeman
Ms. Brandi-Ann Hall
Ms. Katie Hall
Ms. Norma Harding
Ms. Lorrain Hargreaves
Ms. Hannah Hast

Mrs. Anne B. Healey
Ms. Suzanne Heidt
Mrs. Lucia Herrmann
Ms. Casey Hill
Ms. Anna Holland
Mrs. Michele Howe
Mr. Alastair Howie
Ms. Kristen Hunt
Dr. Nancy Husarik
Ms. Summer Hutchins
Ms. Jocelyn Hutchinson
Elizabeth Innie
Ms. Kristine Irwin
Ms. Jessica Janelle
Ms. Melissa S. Johnson
Ms. Darlene Johnson
Ms. Kimberly Johnson
Ms. Pamela Joplin
Ms. Kristen Jordan
Ms. Sonia Joslin
Ms. Carole N. Jutras
Ms. Jennifer Kane
Ms. Dianne Kashiwabara
Mr. Michael Kelley
Ms. Margaret A. Kennedy
Ms. Lois Kesty
Ms. & Mr. Felicia Kiefer
Dr. Brian Knab
Ms. Kerry D. King
Dr. John L. Klunk
Dr. Brian Knab
Ms. Sharon Kostansek
Ms. Ellen Koza
Ms. Molly Lahti
Ms. Marilyn Lattinville
Ms. Ann-Marie Lawrence
Ms. Elizabeth Le
Ms. Brooke Leary
Ms. Susan Leaver
Mr. Donald Leblond
Mrs. & Mr. Andrea Lee
Ms. Jocelyn M. Lepine
Mr. Daniel Levesque
Ms. Kimberly Liguori
Ms. Christina Liriano
Dr. Stephen R. Loosigian
Mr. Christopher Lopez
Ms. Mary E. Lord
Ms. Kristi Lover
Ms. Libby Machakos
Ms. Stephanie Maloney
Ms. Morgan Martineau
Ms. Kathleen Masucci
Ms. Sumitha Mathur
Mr. John R. Matte
Mr. Richard D. Maxwell
Mr. Christopher May
Ms. Lisa McCloskey
Ms. Karen McCloskey
Mr. William McCormick
Ms. Kristy McEvoy
Ms. Deborah McGuire
Dr. Jessica McIntyre
Mr. Garrett McLarty
Ms. Amy McLaughlin

Ms. Jennifer McMenamin
Ms. Bethany Mechachonis
Ms. Lori Merkel
Mr. & Mrs. Jay Michaud
Dr. Holly Mintz
Mrs. Tina Mirabella
Dr. Meghna Misra
Ms. Colleen Moloney
Mr. Michael Monahan
Mr. Kenneth Monty
Ms. Karen Mooers
Ms. Alexandra T. Moreau
Mrs. Claudette Morrison
Ms. Molly Mortimer
Ms. Felicia Morway
Ms. Laurie Mullen
Ms. Clemence Nadeau
Ms. Dawn Newhook
Ms. Susan Nicholls
Ms. Terry O'Brien
Ms. Danielle Oswald
Mr. Maurice J. Pare, Jr.
Ms. Freda Paris
Ms. Lorraine Paris
Ms. Rachel Paris
Ms. Elizabeth Parry
Ms. Carla J. Pellegrini
Mrs. Kathy Perkins
Ms. Marjorie Perry
Ms. Laura Piercy
Ms. Jennifer Pike
Ms. Tabitha Plouffe
Ms. Julia Poisson
Ms. Suzanne E. Potoma
Ms. Rebecca Preller
Ms. Beverly Primeau
Ms. Patricia M. Puglisi
Mr. Casey Purinton
Dr. Muhammed M. Qureshi
Ms. Nicole Rae
Ms. Kelli M. Rafferty
Mr. Jonathan Ramirez
Dr. Lauren Ramos
Dr. Kevin Rankins
Ms. Pam Reczkowski
Dr. Kristine Reid
Dr. Alexis Reimer
Mr. Zeus Rivera
Ms. Lynn Rizzo
Mr. Peter Robichaud
Ms. Fatima Rocco
Ms. Kerry Rogers
Mrs. Shannon E. Rondeau
Ms. Christine Rouleau
Ms. Evangeline Roxas
Dr. Amy Doolan Roy
Ms. Paula Roy
Ms. Wendy Roy
Ms. Tina Ruggiero
Ms. Patricia Russell
Ms. Muriel F. Saliba
Mr. Anthony Sambataro
Ms. Lynda S. Savage
Ms. Kelly Scargill
Ms. Rebecca Sheehan

EMPLOYEE GIVING
CONTINUED



As we welcome 2023 we enter the year pleased that we were able to bring healing, higher quality of life, and joy into so many homes. We look forward to the opportunity to continue to serve you. The knowledge that we make a long-lasting difference in so many lives continues to strengthen and motivate us. So many of you recognize the important work of the VNA through your donations, volunteerism, or sharing your experiences with us. Your thoughtful support of the VNA of Manchester & Southern NH continues to lift our spirits daily and reinforce the value of our work

Dr. Lana Shikhman
Mrs. Suzanne M. Silver
Dr. Siva Sivakumar
Mrs. Susan M. Sloane
Ms. Meagan L. Smart
Mr. Bradford Smith
Ms. Deborah Smithers
Dr. Mary-Lee Sole
Ms. Michelle Solis
Dr. Elizabeth Soukup
Mrs. Shannon St. Onge
Dr. Brenna Stapp &
Dr. Shawn W. Stapp
Ms. Denice Stoll
Mrs. Donna Stone
Mr. & Mrs. Michael Sullivan
Ms. Paige Sutton
Ms. Carole-Lynne Tadman
Mrs. P. Meagan Tarrier
Ms. Randee Tatham
Ms. Lisa Tautfest
Ms. Laura Taylor
Ms. Soraya Tejada
Dr. Michael Thomas
Mrs. Lynn G. Thulin
Mr. Joseph Tingley
Ms. Kathryn Trudel
Ms. Meredith Trudel
Ms. Lynne Usher
Ms. Madeline Valentin
Ms. Amber Vallee
Ms. Rhonda Van Beusichem
Ms. Frances Van Geyte
Ms. Tiffany Vanasse
Ms. Debra VanLaarhoven
Ms. Karen Vaughan
Ms. Dawn Vezina
Ms. Amanda Vincent
Ms. Sarah Vlasich
Mrs. Karyn Vogt
Mrs. JoAnn Walsh
Ms. Jillian Waszazak
Ms. Cheryl Watson
Ms. Sandra Watts
Ms. Priscilla Webler
Mrs. Amy A. Welch
Mr. Justin Wilkie
Mr. Clyde Williams
Ms. Elizabeth Williams
Ms. Danielle Wilson
Ms. Doreen Wolak
Ms. Renee C. Woodring
Mrs. Christine H. Wright
Dr. Emily A. Zajano
Mr. William Zuber

Ms. Brenda Adams-Crafts
Ms. Tracey Allen-Jolicoeur
Dr. Consuelo Alvarez
Mr. William Andrade
Anita Andrade
Eric & Cindy Baggarly
Philip & Sandra Barnes
Ms. Rosa Barnhart
William & Christy Belvin
Ms. Diane Benoit
Ms. Patricia G. Berube
Ms. Theresa Bianchi
Mr. & Mrs. Daniel Bissonnette
Ms. Laura Bloom
Mr. Lawrence Bodge
Marcin & Joanna Boeckl
Ms. Suzanne Boire
Ms. Laura Boisvert
Richard & Lynda Bonner
Mr. & Mrs. Benoit Boucher
Ms. Mary Ellen Bourassa
Mr. Roger L. Bournival
Mr. & Mrs. Edward V. Bowler
Ms. Robynn Brannen
Mr. & Mrs. Brasley
Ms. Cecile Brasley
Ms. Alexis Britton
Ms. Karen Brock Amoah
Mr. Jeffrey Brodsky
Clayton & Lorriane Bushman
Ms. Irene Capozzi
Ms. Patricia Casciano
Mr. & Mrs. Robert Cere
Mr. Steve Chaddock & Mrs. Rachel
Chaddock
Ms. Danielle Chandonnet
Ms. Gail Cherochak
Mr. & Mrs. Joseph V. Ciocca
Mr. David Cochran & Mrs. Ellie
Cochran
Mr. & Mrs. Norman Comeau
Mr. & Mrs. Raymond Camire
Ms. Catherine Conley
Mrs. Joanne Connelly
Ms. Teri Cooper
Mr. William Cote
Ms. Carol Couch
Mr. William Cozort
Mrs. Ann M. Curran
Ms. Carrie Curreri
Ms. Deborah Currier
Mr. & Mrs. Peter A. Dallas
Ms. Bonnie Dalrymple
Ms. Diane Dane

Ms. Ruta E. Daugela
Ms. Ruth Davis
Dorothy DeCotis
Mr. William DeLuca
Mrs. Irene Delude
Mr. William R. Deneau
Robert DePaolo
Ms. Janice Devine
Ms. Katharyn DiBenedetto
Mr. & Ms. Robert Dix
Ms. Jean Dodge
Ms. Lisa Doo
Ms. Carolyn Dorr Rich
Mr. Thomas Dovholuk
Mr. Carl Dubois
Eastern Bank Charitable Foundation
Mr. Thomas Eckhardt
Ms. Tonya Eggleston
Mr. Sven Emilsson
Dr. & Mrs. Jack T. Evjy
Mrs. Barbara B. Feloney
Fidelity Charitable Gift Fund
John & Barbara Field
Ms. Jennifer Finn
First Baptist Church of Brentwood
Mr. John Flanagan
William & Dorothy Flanagan
Mr. & Mrs. Lawrence C. Fleury
Ms. Lisa Flori
Barbara & Normand Francoeur
Ms. Donna M. Frizzell
Ms. Norma Fulton
Mr. Bernard G. Garrity, Jr.
Mr. & Mrs. Robert E. Gaudreault
Carmelo & Susan Giaccotto
Ms. Donna Giberson
Mr. Craig Gibson
Ms. Celeste Gobeil
Mrs. & Mr. Fran Goldberg-Cohen
Bruce & Pamela Goldman
Ms. Nancy Goodell
William & Cheryl Gordon
Mr. Chuck Gowing
Mr. & Mrs. Charles Gowing
Ms. Jaqueline Granier
Ms. Kathleen Griest
Ms. Kristen Gurtman
Charles & Mary Jane Hamidy
Mr. James Hammond
Ms. Roberta Hannaford
Hannaford Bloomin' 4 Good Program
Ms. Diane Harrises
Mrs. Anne B. Healey
Ms. Linda Heath

Mr. & Mrs. Gerard Heon
Hitchiner Manufacturing Co., Inc.
Ms. Maria Holland-Law
Mr. & Mrs. Burton Hyman
Ms. Mary Ellen Ianzito
Mr. John G. Idzelis
Ms. Christine Idzelis
Ms. Aimee Jalbert
Mr. & Mrs. David Jeannette
Mrs. Amy Jenkins
Thomas & Linda Jenkins
Mr. Glenn Jenkins
Ms. Leslie Johnson
Mr. Michael Johnson
Mr. Donald Johnson
Ms. Kimberly M. Joseph
Kalwall Corporation
Ms. Cynthia M. Keaveney
Mrs. Jacqueline Keller
Dottie & William Kelley
Ms. Erin Kerwin
Ms. Jeanne Kilroy
Kyung Soon Kim
Koopman Lumber Co., Inc.
Ms. Jacqueline Kromer
James & Kathleen Kromer
Ms. Michele Lacz
Ms. Anita LaFleur
Ms. Carol Lake
Mr. & Mrs. Donald H. Lamarre
Ms. Kristin Lamont
Ms. Judith Lamont
Mr. & Mrs. Richard Langlois
Mrs. Virginia Lapan
Mr. & Mrs. Louis R. Lavigne
Ms. Diane Lavoie
Ms. Ivy B. Levine
Ms. Valrie Lewis
Ms. Jane Leydon
David & Suzanne Lipiro
Ms. Cynthia Loeffler
Ms. Mary Lord
Mr. Philip Lynch
Ms. Linda Macedonio
Mr. Ignatius MacLellan
Ms. Arlene Mahoney
William & Rosemary Mahoney
Ms. Linda Marston
Ms. Lynda Martin-Heaney
Mr. & Mrs. William E. Marvin
Mr. Anton Materna
Ms. Luisa Matta
Ms. Jeanne McGiffin
Mr. Timothy McGuiness



VNA DONORS CONTINUED

McKinnon's Markets
Ms. Nicole McMahan
Doreen McNeill
Richard & Carol Morse
Ms. Debra Moskey
Mr. Leonard Mulroy
Ms. Denise Nash
Ms. Pamela A. Naum
Ms. Christine Nawrocki
Mr. & Mrs. John K. Neubert
New Hampshire Charitable
Foundation
Robert & Nancy Newman
Ms. Diane Nolan
Mr. William Northrup
Mr. Stephen Oakes
Ms. Karen O'Brien
Jim & Donna O'Connor

Ms. Cassandra O'Connor
Mr. Cecil Ogren
Mr. Ross Palmes
Mr. William J. Pananos
Mr. Ernest Paquin
Ms. Lynn Pardo
Ms. Diane Parks
Ms. Anita L. Patsos
Mr. & Mrs. Kenneth Perkins
Bruce & Deborah Pierce
Ronald & Nancy Plourde
Ms. Sally Pratt
Ms. Kimberley Prygocki-Jeakins
Ms. Shannon Quinlan
Thomas & Mary Quinn
Mr. Barbara Ramsdell
Mr. & Mrs. Richard Rankhorn

Ms. Elsie Raylinsky
Ms. Margaret Rizzo
Michael Roberts
Mr. Arthur E. Rugg
Mr. Jay Salem
Ms. Judith A. Salkovitz
Mr. & Mrs. Alan Searleman
Ms. Donna Shannon
Gary & Patricia Shubelka
Ralph & Dorothy Sidore
Ms. Diane Simone
Ms. Bonnie Skillings
Ms. Suzanne Smith
Mr. Jeffrey Smith
Ms. Corrine Smith
Ms. Linda Snow
Ms. Elsie Snyder
Armand & Janice Soucy
William & June St. Lawrenceck

Domenic & Patti Steinbruec
Mr. Scott Sullivan-Congdon
Charles & Joanne Tiedemann
Mr. & Mrs. William F. Toolin
Edmund & Diane Tortolani
United Way of Massachusetts Bay
Mr. Augusta Vaillancourt
Perry Vallee
Mrs. Elizabeth Valway
Mr. Keith Veale
Ms. Sharon A. Wainright
Lt. Colonel John Walker
Mr. Warren Wasson
Ms. Garnette Westbrook
Whispering Winds Adult Community
- Activity Fund
Mr. & Mrs. Robert W. Williams
Ms. Betsy Woodring
Ms. Laurie Yennaco

WAYS TO GIVE

Annual Giving

Each year the Annual Fund Campaign provides funding to purchase life-saving technology, expand services to accommodate the increasing demand for care, and provide our clinicians with professional development opportunities. Visit elliothospital.org/igive or contact Rachel Chase at rchase@elliott-hs.org to learn more.

Corporate Giving

With a one-time gift through a Corporate Partnership sponsor package, your giving will include support for and be acknowledged at our Annual Signature Events and, at some levels, the Vineyard Garden Party and the Walk for Hope. Contact Kelli Rafferty at krafferty@elliott-hs.org to learn more.

Inspired Giving

The Inspired Giving program provides an opportunity for patients and family members to thank Elliot staff for the exceptional care received at the Elliot, remember a loved one, or celebrate an important milestone. Visit elliothospital.org/inspired to learn more.

Monthly Giving

Monthly donations impact the lives of the patients we serve all year! Your donations will support the area of your choice and is available to the department each month to support clinical upgrades, patient programs, and staff training. Sign up for your monthly donation online at elliothospital.org/donate.

Planned Giving

Leave a legacy gift that will have a lasting impact on the community while enabling you to derive a benefit and possibly reduce tax and estate burdens. There are many ways to leave a lasting impact on a charitable organization. Visit elliothospital.org/foundation or contact Kelli Rafferty at krafferty@elliott-hs.org to learn more.

Gifts of Securities

Make your gift through appreciated stocks, bonds, or mutual funds. In order to ensure a seamless transfer, please contact the Foundation at 603-663-8934 prior to transfer.

Matching Gifts

You may be able to increase your gift through a matching gift program offered by your employer. Many companies offer programs to match their employees' charitable contributions. Check your company web or call your Human Resources department to learn more.

Learn more or make your gift today at
elliothospital.org/foundation

Checks can be made payable to:
Mary & John Elliot Charitable Foundation
701 Riverway Place, Bldg. 7
Bedford, NH 03110-9930



Mary & John Elliot Charitable Foundation
Bedford Commons
701 Riverway Place, Building 7
Bedford, NH 03110-9930



603-663-8934



@mjefoundation



elliothospitalhealthsystem